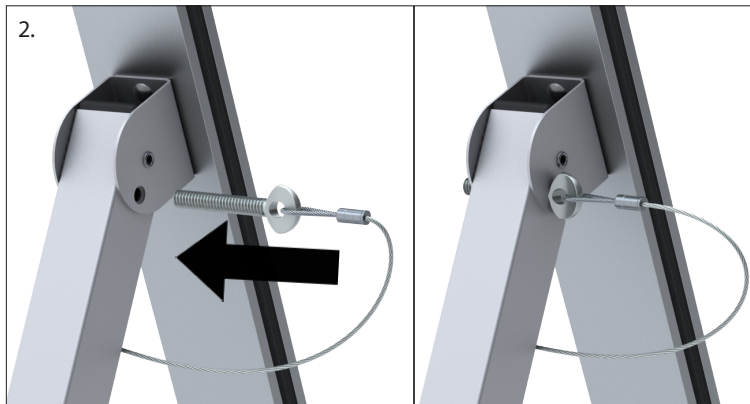


Incline Stand™ - INC Series

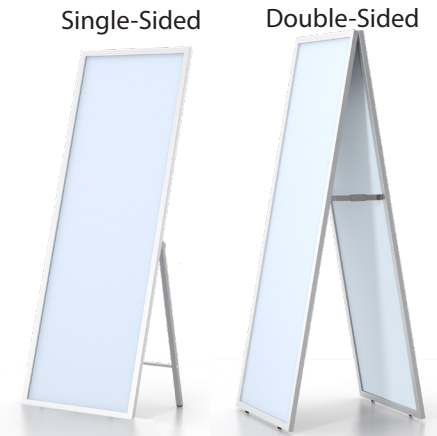
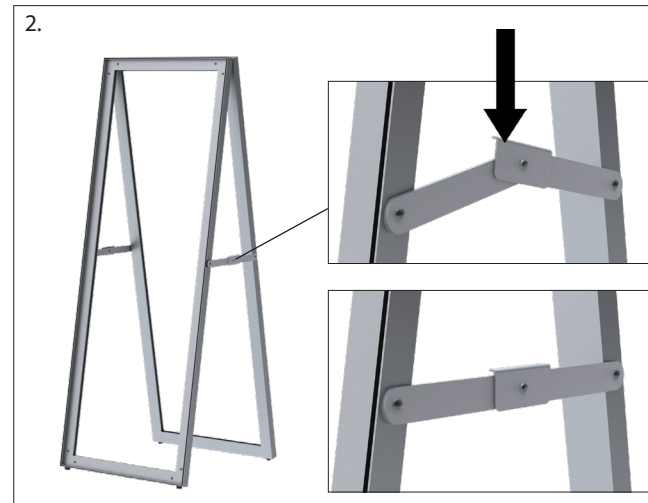
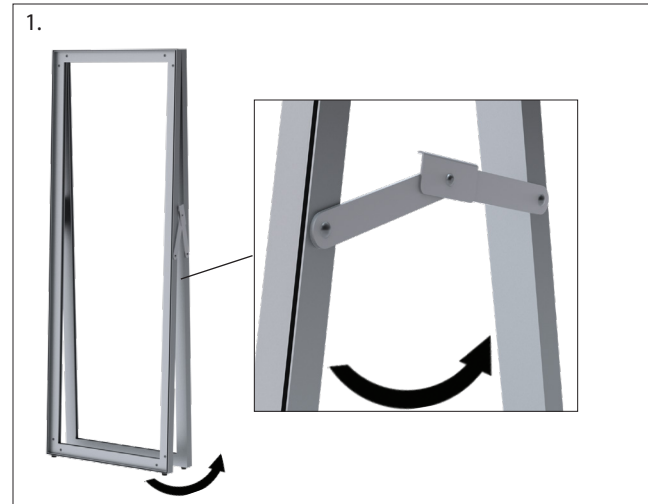
For Single-Sided stands:

1. Stand the frame upright with the rubber feet on the floor. Carefully pull the leg assembly away from the frame, until the hole in the upright aligns with the holes on the bracket.
2. Insert the first attached thumb screw through the hole of the bracket, into the leg, and twist clockwise to engage the thread on the other side of the bracket. If the thumb screw doesn't catch you may need to adjust the position of the legs slightly or gently push the thumbscrew into the hole while twisting. Continue twisting until thumb screw is tight. Repeat installation of thumb screw for the second leg.
3. Insert the graphic (see next page for graphic installation details).



For Double-Sided stands:

1. Stand the frames upright with the rubber feet on the floor, and carefully separate the front and back frames.
2. Gently push down on the top brace until the arms are fully horizontal as shown below, which will spread the frames farther apart.
3. Insert the graphic (see next page for graphic installation details).



INCNST - MONSTR FRAME shown



INCEO - EASYOPEN SNAPFRAME shown

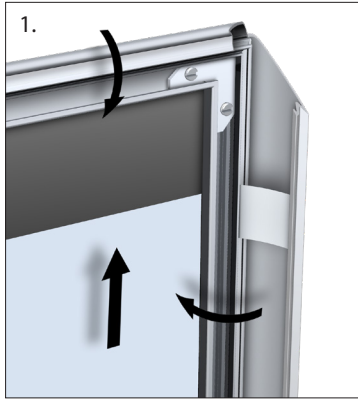


INCSEG - CHARISMA SEG shown

Incline Stand™ - INC Series

For INCEO - EasyOpen SnapFrame Graphic:

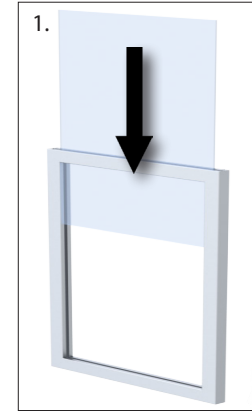
1. Open all 4 sides, using 2 hands for the longer vertical sides. Place graphic in frame and slowly snap frame flaps down over graphic to secure.



INCEO - EASYOPEN SNAPFRAME shown

For INCNST - Monster Frame Graphic:

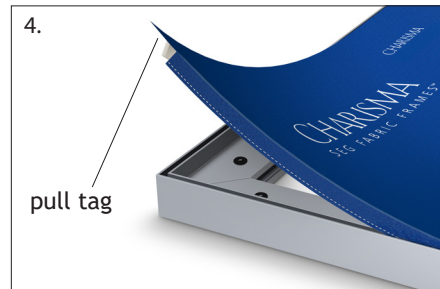
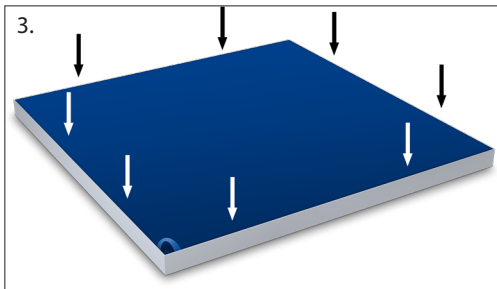
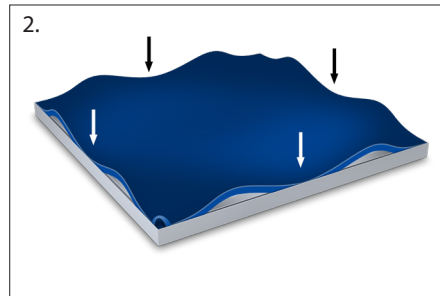
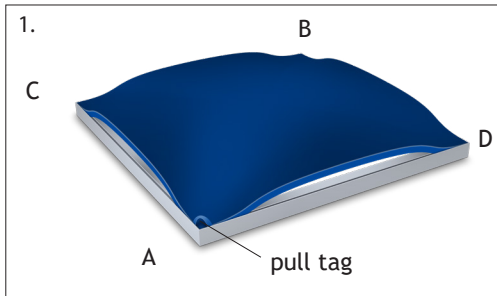
1. Insert the graphic from the top of the frame. If the graphic is thin, you may need to use a rigid backer board to prevent the graphic from falling through.



INCNST - MONSTR FRAME shown

For INCSEG - Charisma SEG Graphic:

1. To install the graphic, take the corner with the pull tag on it and press about 6"-10" of silicone into the frame channel corner A. Repeat for the opposite corner B. Repeat for the next corner C. Lastly, repeat for the final corner D.
 2. After all corners are pressed in, press the silicone into the frame channel at the mid-points on all four sides.
 3. Press silicone into frame evenly between the corners and midpoints.
- This prevents the graphic from bunching up or stretching too much and will ensure a smooth and tight fit.
4. To remove the graphic from the frame, simply pull up on the pull tag.



INCSEG - CHARISMA SEG shown